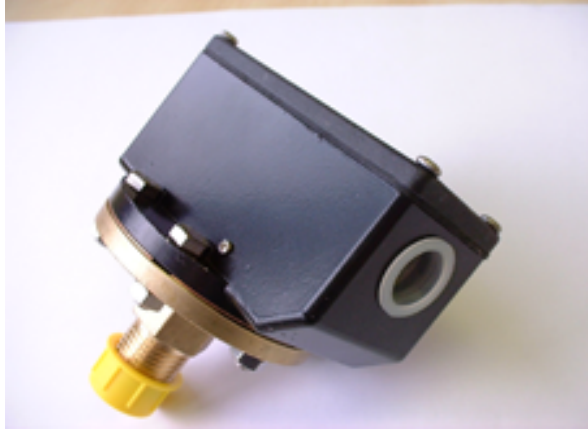


# LSPS-1381

## Liquid Static Pressure Switch



### Product Overview

The LSPS-1381 range of pressure switches are a cost effective pressure monitoring solution for liquids and non aggressive gases. There are two ranges one with fixed hysteresis and other with adjustable hysteresis. The compact design and rugged construction makes the LSPS suitable for monitoring pumps, chillers, valves etc.

### Features

- 1/2" BSP Male Pipe Connection
- Direct switching of 240Vac loads

### Product Specifications

<b>Range:</b>	LSPS-1381-1	-1 to 1 Bar
	LSPS-1381-4	0.2 to 4 Bar
	LSPS-1381-11	0.5 to 11 Bar
	LSPS-1381-28	2 to 28 Bar
	LSPS-1381-42	2 to 42 Bar
<b>Fixed Differential:</b>	LSPS-1381-1	0.04 Bar
	LSPS-1381-4	0.07 Bar
	LSPS-1381-11	0.3 Bar
	LSPS-1381-28	0.6 Bar
	LSPS-1381-40	0.8 Bar
<b>Adjustable Differential:</b>	<b>-V versions:</b>	Differential adjustable 5 to 95% of range
<b>Pressure Connection:</b>		1/2" BSP Male
<b>Electrical Connection:</b>		Screw Terminals Suitable for 1.5mm <sup>2</sup> Conductors max
<b>Contact Rating:</b>		10A @250Vac Inductive
<b>Materials:</b>	Pressure Chamber	Brass
	Diaphragm	Beryllium copper
	Sealing Gasket	< 11 Bar PTFE, >11 Bar Nitrile rubber.
	Housing	Aluminium / Diecast Zinc
	Lid	Glass filled nylon with Nitrile seal
	Mounting Bracket	Zinc plated steel bracket
<b>Protection:</b>		IP65
<b>Fluid Temperature:</b>		-10°C to +85°C
<b>Dimensions:</b>		92 x 105 x 77mm
<b>Weight:</b>		0.76kg
<b>Country of Origin:</b>		U.K.

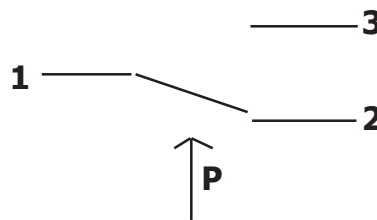
# LSPS-1381

## Liquid Static Pressure Switch

### Order Codes

LSPS-1381-1	Liquid Pressure switch fixed Hysteresis -1 to 1 Bar
LSPS-1381-4	Liquid Pressure switch fixed Hysteresis 0.2 to 4 Bar
LSPS-1381-11	Liquid Pressure switch fixed Hysteresis 0.5 to 11 Bar
LSPS-1381-28	Liquid Pressure switch fixed Hysteresis 2 to 28 Bar
LSPS-1381-40	Liquid Pressure switch fixed Hysteresis 2 to 40 Bar
LSPS-1381-1-V	Liquid Pressure switch Adjustable Hysteresis -1 to 1 Bar
LSPS-1381-4-V	Liquid Pressure switch Adjustable Hysteresis 0.2 to 4 Bar
LSPS-1381-11-V	Liquid Pressure switch Adjustable Hysteresis 0.5 to 11 Bar
LSPS-1381-28-V	Liquid Pressure switch Adjustable Hysteresis 2 to 28 Bar
LSPS-1381-40-V	Liquid Pressure switch Adjustable Hysteresis 2 to 40 Bar

### Connections



- 1 Common
- 2 Normally Closed
- 3 Normally Open

1 - 2 Closed when **below** operating setpoint

1 - 3 Closed when **above** operating setpoint

### Adjusting the Setpoint

1/ Using a pressure gauge, apply the required pressure to the switch

2/ Turn the adjusting nut anticlockwise until the switch operates. The switch is now set to operate on rising pressure (contacts 1 & 3 make)

3/ To set the switch to operate on falling pressure, turn the adjusting nut clockwise until the switch resets. (contacts 1 & 2 make)

**N.B.** A 1/4 turn of the adjusting nut will change the setpoint by approximately 10% of the switch range.

### Setting the Differential (-V versions only).

4/ Rotate the adjustment wheel clockwise until tight ( sets hysteresis to minimum)

5/ Set switch to required setpoint as above.

6/ Rotate hysteresis wheel anticlockwise until required Hysteresis is achieved

**N.B.** During the setting of the hysteresis, there may be a small change in the setpoint, and slight readjustment of this may be needed

**N.B.** If the Hysteresis is greater than the switchpoint the switch will not reset.

#### Notes.

The switch will operate mounted in any orientation