



I-7188E series Quick Start Manual

Package Checklist

The package includes the following items:

- One I-7188E hardware module
- Two User Manuals
- One companion CD
- One Quick Start Manual (this manual)
- One RS-232 download cable (CA-0910)

Related documents and firmware

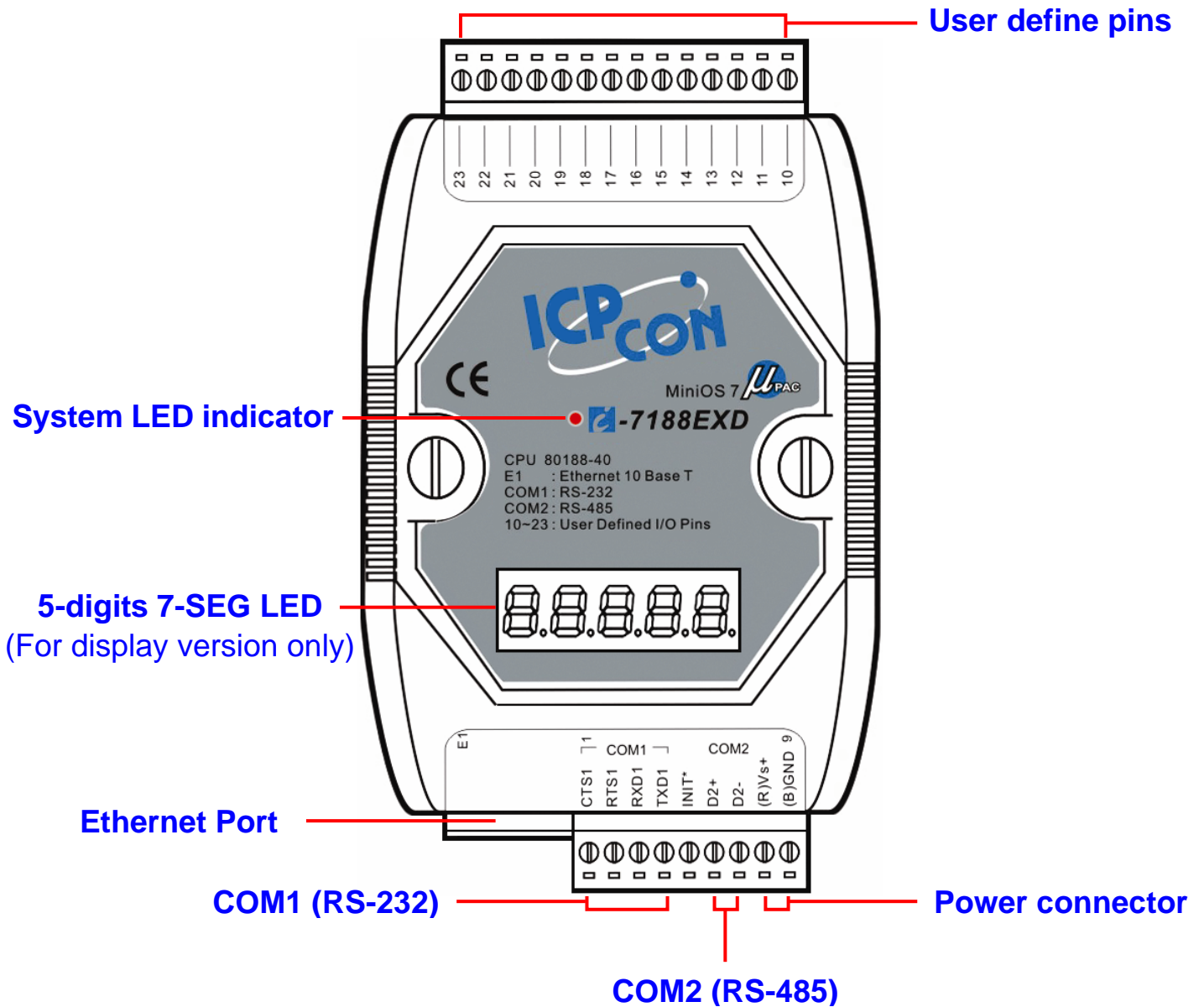
Documents

- User Manual (software): 7188ess.pdf
- User Manual (hardware): 7188ehh.pdf
- Quick Start Manual: 7188E_QuickStart_Manual.pdf
- CD:\NAPDOS\7188E\Document\
- <http://ftp.icpdas.com/pub/cd/8000cd/napdos/7188e/document/>

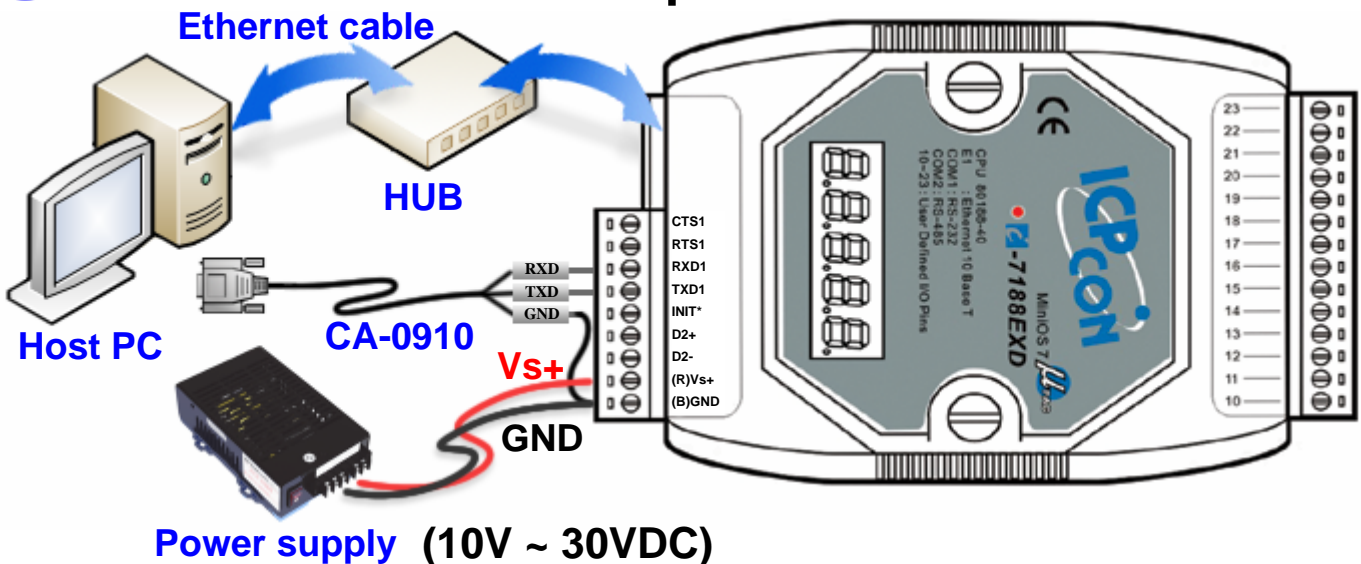
Firmware

- CD:\NAPDOS\7188E\TCP\VxComm\Server(7188e)\
- [http://ftp.icpdas.com/pub/cd/8000cd/napdos/7188e/tcp/vxcomm/server\(7188e\)/](http://ftp.icpdas.com/pub/cd/8000cd/napdos/7188e/tcp/vxcomm/server(7188e)/)

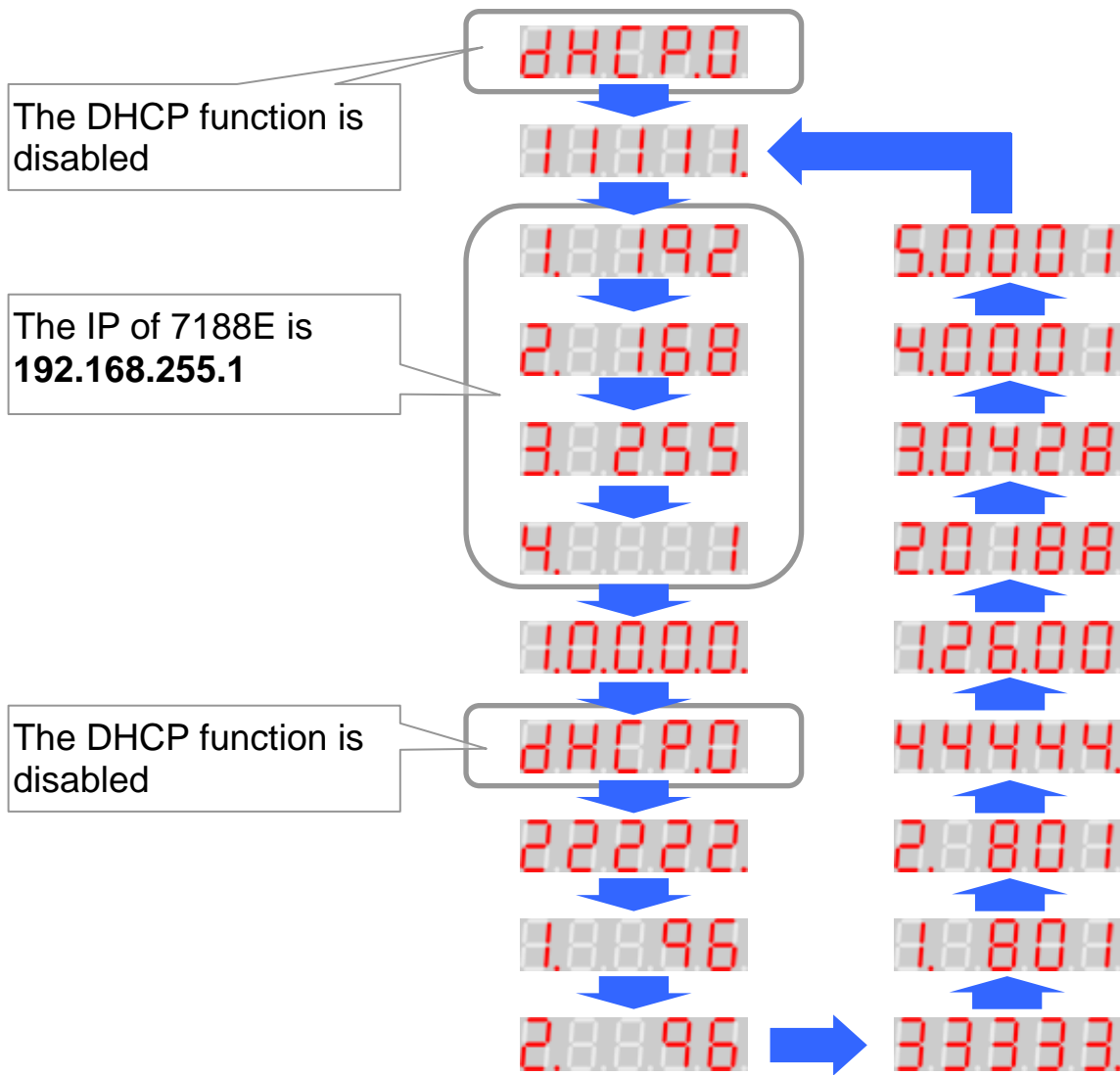
View of the I-7188E



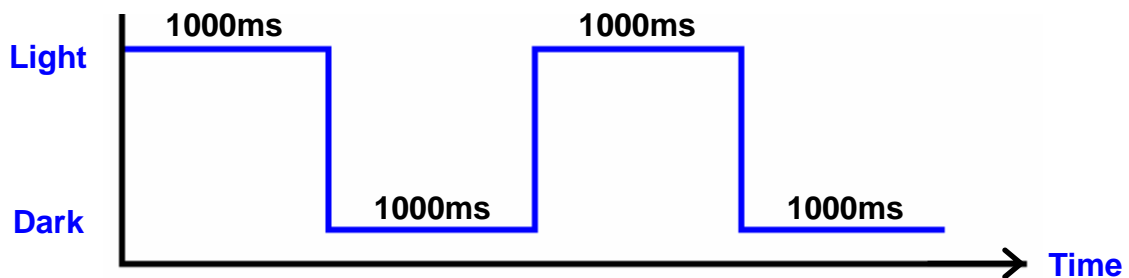
Connect the I-7188E to power and Host PC



After powering on the I-7188E, the 5-digits 7-SEG LED will show system information as follows:



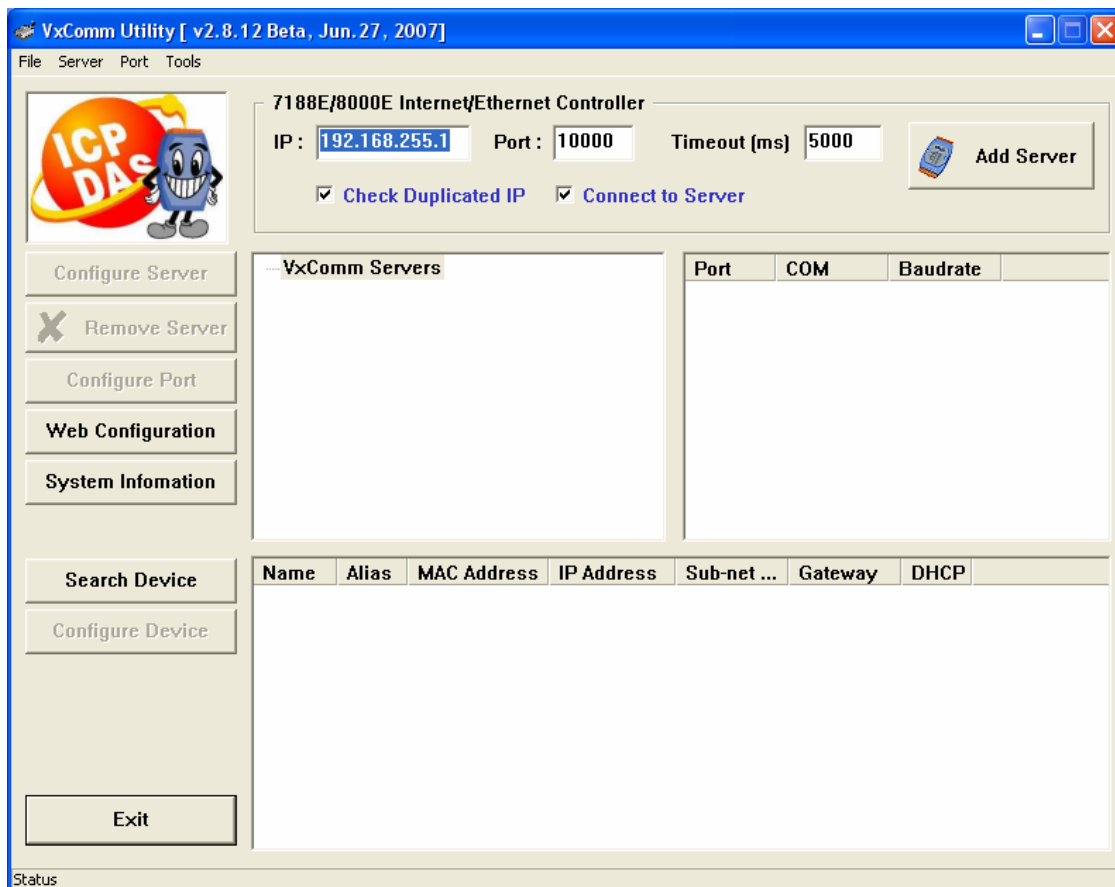
And the system LED indicator will continuously blink as the diagram below.



Software Installation

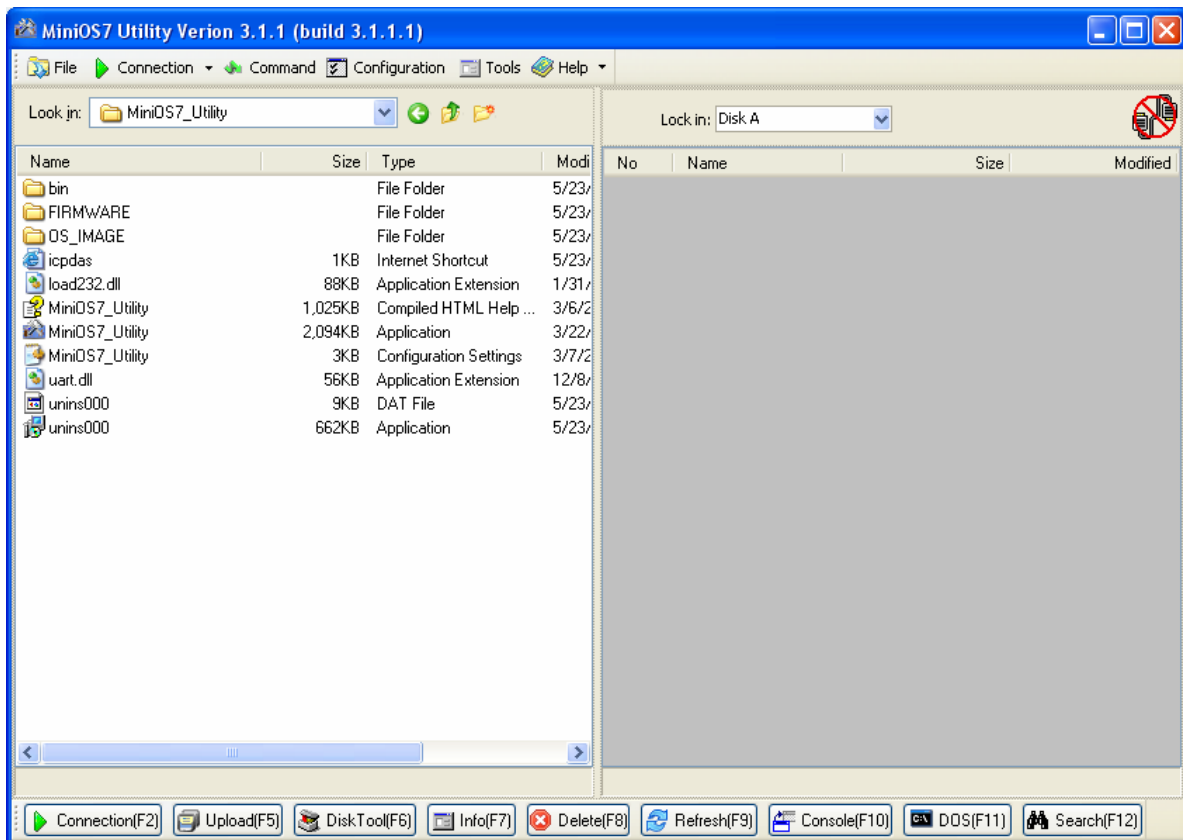
Install VxComm Utility

- The installation software can be obtained from the following location.
 - CD:\8000\Napdos\7188e\tcp\vxcomm\driver(pc)\
 - [http://ftp.icpdas.com/pub/cd/8000cd/napdos/7188e/tcp/vxcomm/driver\(pc\)/](http://ftp.icpdas.com/pub/cd/8000cd/napdos/7188e/tcp/vxcomm/driver(pc)/)
- Install the VxComm Utility.
- Reboot the computer and refer to next section to configure the virtual COM.



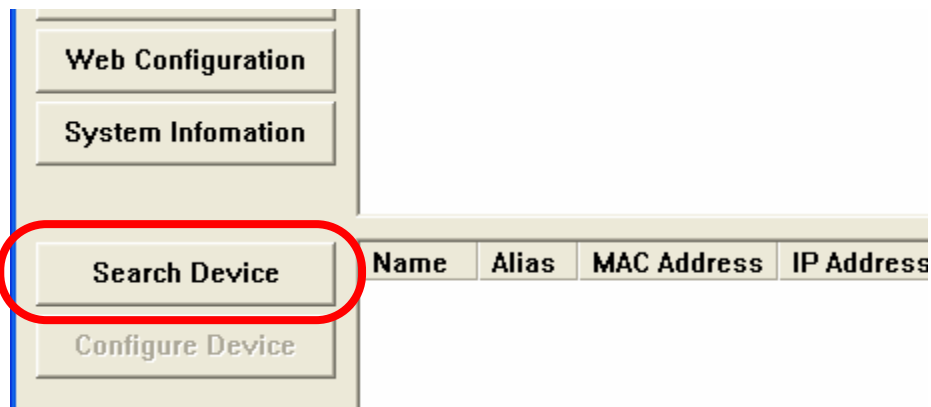
Install MiniOS7 Utility

- The installation software can be obtained from the following location.
- CD:\8000\Napdos\minios7\utility\minios7_utility\
 - http://ftp.icpdas.com/pub/cd/8000cd/napdos/minios7/utility/minios7_utility/



➔ Configure the Ethernet settings of I-7188E

1. Run the VxComm Utility and then search the I-7188E.



Name	Alias	MAC Address	IP Address	Sub-net ...	Gateway	DHCP
7188E2	N/A	00:0d:e0:00:42:3d	192.168.255.1	255.255....	192.168.0.1	OFF

The Ethernet settings of I-7188E2, which is found, will be displayed here.

2. Double-click the I-7188E to configure the Ethernet settings.

Configure Device (UDP)

Device Name : 7188E2

IP Address : 192.168.255.1 **Step 1**

Sub-net Mask : 255.255.0.0

Gateway : 192.168.0.1

Alias: N/A [7 Chars]

MAC: 00:0d:e0:00:42:3d

DHCP: 0: OFF

Warning!!
Contact your Network Administrator to get correct configuration before any changing!

Step 2

OK Cancel

➔ Add an I-7188E server and configure the VxComm driver

1. Run the VxComm Utility. Type the IP address of the I-7188E and click the **Add Server** button to add a new server.

7188E/8000E Internal Controller

IP : 192.168.255.1 **Step 1** Port : 10000 Timeout (ms) 5000 **Step 2**

Check Duplicated IP Connect to Server

Add Server

Ensure that the **Check Duplicated IP** and **Connect to Server** options are both checked.

2. Configure the virtual COM port(s) by double-clicking Port1, Port2, etc.

VxComm Servers

7188E2 [192.168.255.1]

Port	COM	Baudrate
Port I/O	Reserved	Fixed
Port 1	UnMap	Dynamic
Port 2	UnMap	Dynamic

Step 1

Port Configuration

Server: 7188E2 [192.168.255.1], Port 1

Port Mapping (PC) | Port Setting (Device)

Select COM

COM2 **Step 2**

COM3

COM4

COM5

COM6

COM7

COM8

COM9

COM10

COM11

COM12

COM13

COM14

COM15

Re-assign COM ports

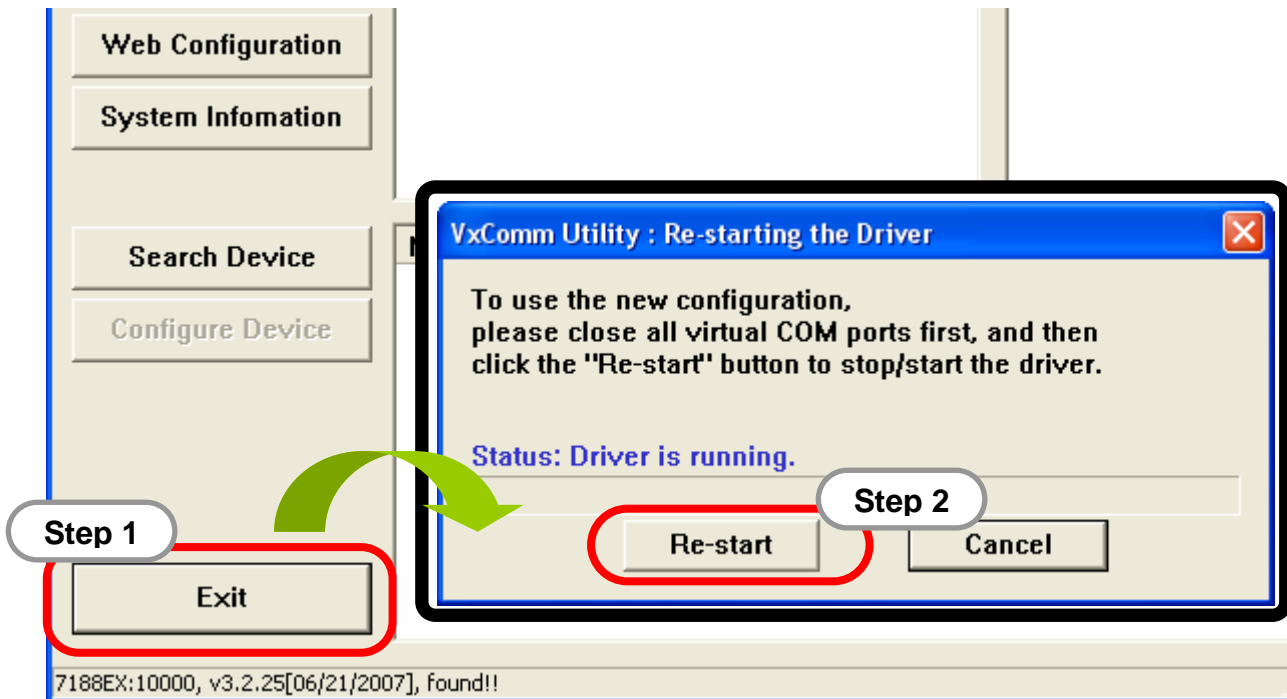
Skip baudrate and data format changes.

Virtual COM Port (Less conflict)

Step 3

OK Cancel

3. Click the **Re-start** button to re-start the driver.

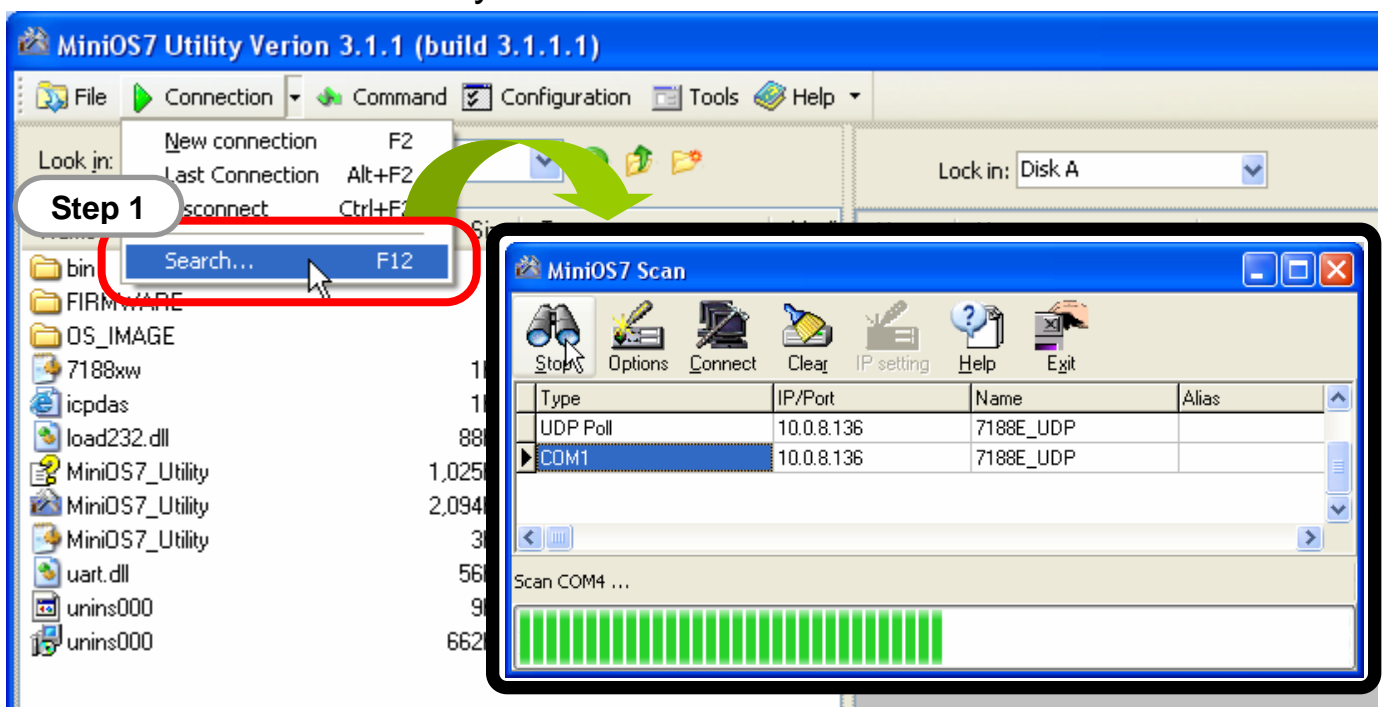


Download VxComm firmware to the I-7188E

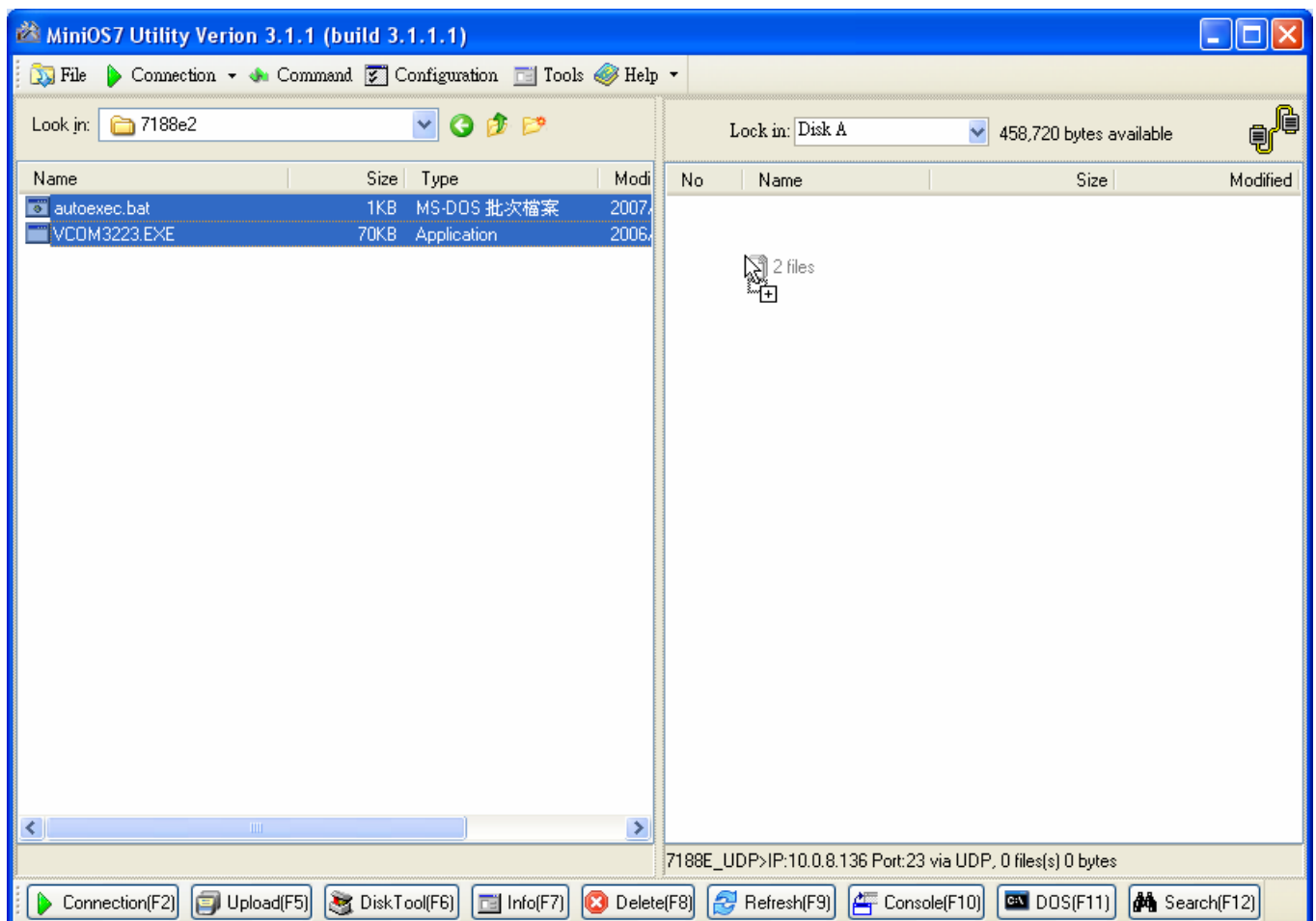
1. The VxComm firmware, vcomnnn.exe, can be obtained from the following location:

- CD:\NAPDOS\7188E\TCP\VxComm\Server(7188e)\
- [http://ftp.icpdas.com/pub/cd/8000cd/napdos/7188e/tcp/vxcomm/server\(7188e\)/](http://ftp.icpdas.com/pub/cd/8000cd/napdos/7188e/tcp/vxcomm/server(7188e)/)

2. Run the MiniOS7 Utility and then search the I-7188E.



3. Double-click the module name to go into the download window.
4. Click the “Look in” pull-down menu to go to the location of VxComm firmware.
5. Drag-and-drop the files from left hand window to right hand window to download files into the I-7188E.



Technical Support

1. ICP DAS Service : service@icpdas.com
2. ICP DAS Website: www.icpdas.com