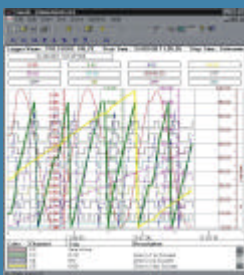
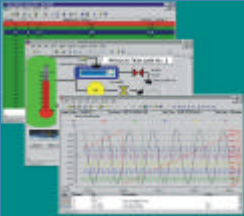


Datascan

instant



The Datascan Instant packages all include the Orchestrator³² software package.

This package is suitable for Windows 2000/XP/2003 Operating systems and will support up to 32 I/O channels. Other features include 32 User Analogs, User Digital's and History Channels. Data logging is achieved via 4 simultaneous loggers. Unlimited trending is available as well as 128 Calculator Channels, Datascan Driver, OPC Client and Configurable Monitor Facility – software secured. All three Instant packages include a 24V DIN rail mounted power supply and one RS232 PC to Datascan serial cable.

The Datascan Instant 8 channel system consists of the following hardware:

One 8 channel expandable Measurement Processor. Including processor, battery backed RAM 14/16 bit ADC, isolated RS232 host communications port, isolated RS485 network interface and 8 input channels for Voltage, Thermocouples, Strain, PRT's, Resistance and 4-20mA Transducers. Local expansion bus. For use with 7020/21/27/31/35/36/50 scanner modules.

The Datascan Instant 16 channel system consists of the following hardware:

16 channel expandable Measurement Processor. Including processor, battery backed RAM, 14/16 bit ADC, isolated RS232 host communications port, isolated RS485 network interface and 16 input channels for Voltage, Thermocouples and 4-20mA Transducers. Local expansion bus. For use with 7020/21/27/31/35/36/50 scanner modules.

The Datascan Instant 32 channel system consists of the following hardware:

32 channel non-expandable Measurement Processor. Including processor, battery backed RAM, 14/16 bit ADC, isolated RS232 host communications port, 32 input channels for Voltage, Thermocouples and 4-20mA Transducers.

Please contact us for further information on:

Tel. 01635 576800
Fax. 01635 31023

E-mail. info@msl-datascan.com
Visit us: www.msl-datascan.com